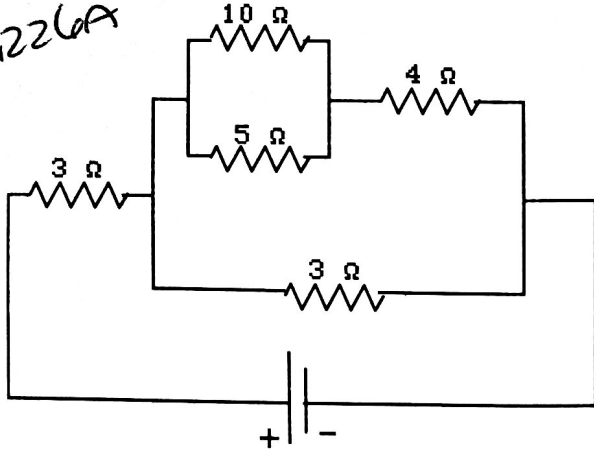


425

The voltage in the battery is 6V.  
Find the current through the 5Ω

resistor

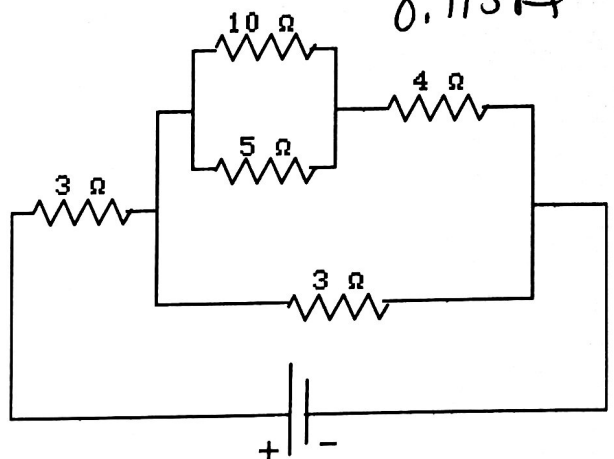
0.226A



The voltage in the battery is 6V.  
Find the current through the 10Ω

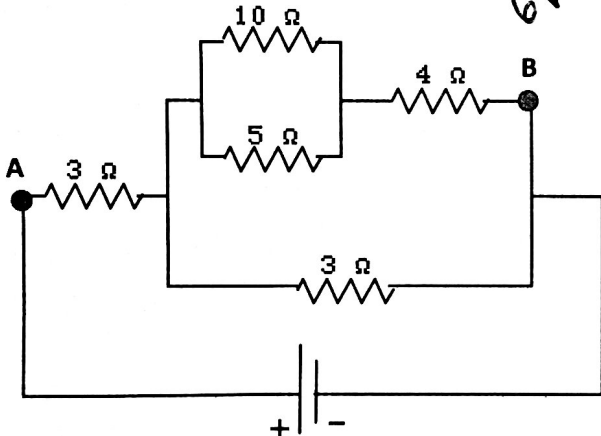
resistor

0.113A



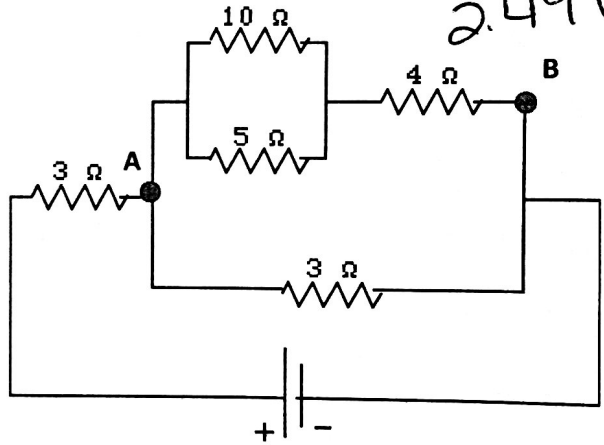
The voltage through the battery is 6V. Find the voltage between points A and B

6V



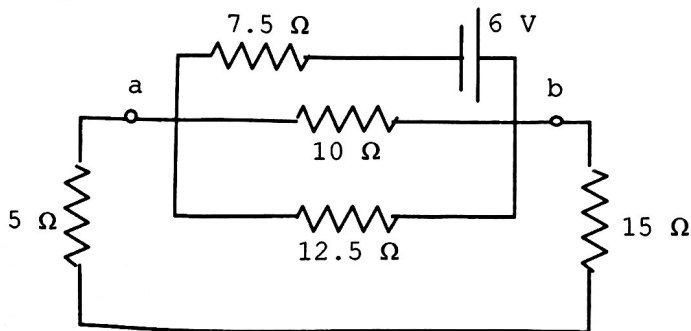
The voltage through the battery is 6V. Find the voltage between points A and B

2.49V



Find the power through the 5Ω resistor

0.0665W



Find the power through the 10Ω resistor

0.485W

